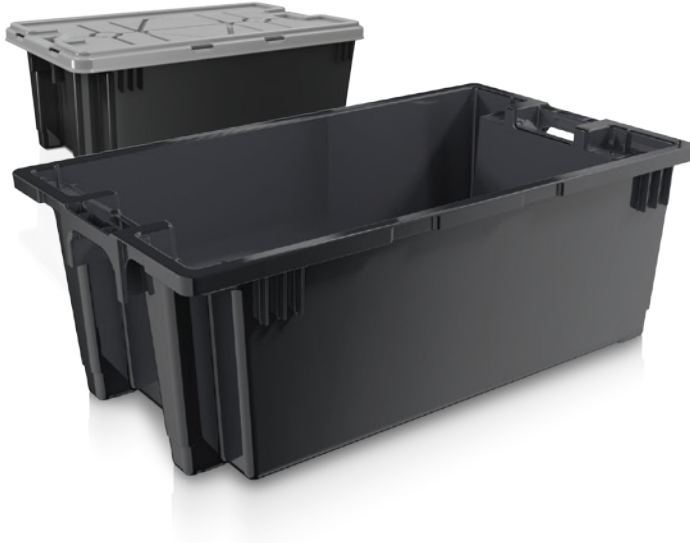


STACKNEST THE HEAVY-DUTY



The revamped structure of the StackNest with load capacity of 70 liters or 150 pounds, designed to withstand thumps and bumps. When empty, the StackNest can be nested with all other competitor's brands, simply by turning them 180°. The components of its plastic makes it the champion of temperature variations.

StakNest 70L
60258



StakNest 85L
60263



StakNest 100L
60231



IDEAL FOR:

- Distribution centers
- Retail stores
- Fisheries
- Automotive parts

Product	Model	Options	Maximum Outside Dimensions inches, (cm)			Minimum Inside Dimensions inches, (cm)			Nesting ratio	Capacity ft ³ (L)	Quantity per pallet*	Quantity per 53' truckload*
			L	W	H	L	W	H				
StakNest 70L	60258	Holes No Holes	31.7 (80.6)	18.3 (46.4)	11.6 (29.5)	25.0 (63.5)	15.8 (40.0)	10.2 (25.9)	3.5:1	2.5 (70.6)	81	2673
StakNest 85L	60263	Holes No Holes	31.7 (80.6)	18.3 (46.4)	12.9 (32.7)	25.0 (63.5)	15.8 (40.0)	12.1 (30.8)	3.1:1	2.63 (74.4)	69	1932
StakNest 100L	60231	Holes No Holes	35.3 (89.7)	19.4 (49.3)	14.1 (35.8)	29.1 (73.9)	15.8 (40.0)	12.6 (32.0)	3.2:1	3.7 (104.8)	51	1326
StakNest Lid	60307	----	32.4 (82.2)	19.0 (48.3)	2.0 (5.1)	31.8 (80.6)	18.5 (47.0)	1.5 (3.8)	1.7:1	----	150	4200
StackNest Freezer Tray	60239	----	23.6 (60.0)	15.2 (38.7)	6.6 (16.7)	21.9 (55.6)	14.1 (35.7)	4.8 (12.1)	2.4:1	1.04 (29.5)	155	4340